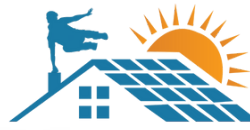


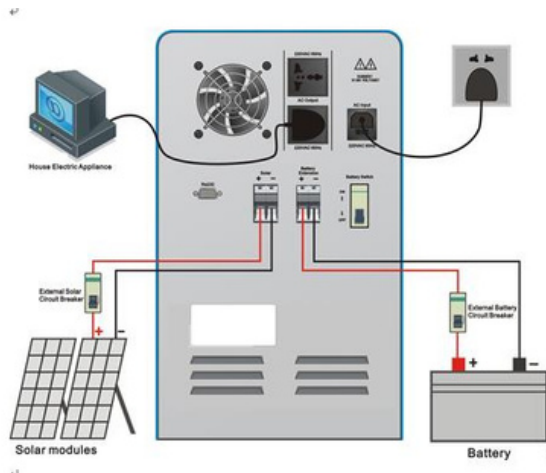
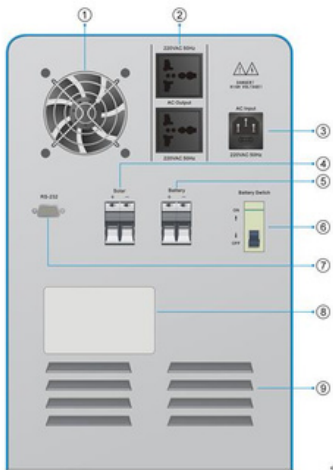
# Portable solar system 1000W/1500W



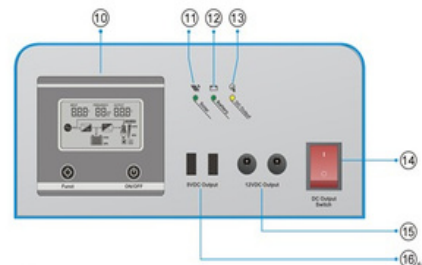
**chillnet Solar**  
the power of simplicity

## 1、 Product features Product Features

- Excellent performance because of double CPU intelligent control technology;
- A wide range of applicable loads because of pure sine wave AC output
- The mains supply mode/energy-saving mode/battery mode can be set for flexible
- Convenient and practical 5VDC-USB output port and 12VDC output port;
- Digital LCD and LEDs for visualization of operation status of the equipment
- Overcharge protection and over discharge protection for a longer battery life; ;
- Safe and reliable with intelligent exhaust fan control
- Overall automatic protection and alarms including AC output overload protection. short circuit protection. etc.



- 1--Fan:  
2--AC Output (Max. 10A)  
3--AC Input:  
4--Solar:Solar module input terminals  
5--Battery:External battery input terminals(selectable)  
6--Battery Switch:built-in battery switch  
7--RS232communication port  
8--Model stickers  
9--Heat dissipation window



Instructions:⌘

- ⑩-- Inverter LCD display / operation interface⌘
- ⑪--Solar: Solar input state indicator⌘
- ⑫--Battery: Battery mode indicator ⌘
- ⑬--DC Output :5VDC-USB、 12VDC output indicator⌘
- ⑭--5VDC-USB、 12VDCoutput ON/OFF switch⌘
- ⑮--12VDC Output: 12VDCoutput terminal⌘
- ⑯--5VDC Output: 5VDC-USB output terminal⌘

# TECHNICAL DATA

Model	BT-1000W		BT-1000S	BT-1500W
Battery rated voltage (VDC)	12	24	24	24

Inverter	Rated power(W)	1000W		1000W	1500W
	Input voltage range (VAC)	160-275VAC			
	Input frequency (Hz)	45Hz-65Hz			
	Output voltage (VAC)	110VAC/220VAC			
	Output frequency (Hz)	50Hz/60Hz			
	Output wave	Pure Sine Wave			
	Specification of built-in battery	1*100AH/12V	2*55AH/12V	2*100AH/12V	2*100AH/12V
	Communication	RS232			
Solar input	Max. PV voltage (VDC)	≤25	≤50		
	Range of charging voltage (VDC)	10-25	20-50		
	Controller rated charge current (A)	PWM 30A			
	Voltage for overcharge protection (VDC)	14.2	14.2	28.4	
	Voltage for overcharge recovery (VDC)	14.0	14.0	28.0	
	Solar input power range	150W/180W two pcs in parallel	270W/300W two pcs in parallel		270W/300W two pcs in parallel
DC output	Voltage for high voltage protection (VDC)	16V	32V	32V	
	High voltage recovery voltage (VDC)	15.2V	30.4	30.4	
	Low voltage recovery voltage (VDC)	12.6V	25.2	25.2	
	Low voltage protection voltage (VDC)	11	22	22	
	5VDC USB output	2units /MAX 2A			
	12VDC output ports	2units/MAX 2A			
	Heat dissipation/Cooling	Temperature control by intelligent exhaust fan			
Operating ambient temperature	-20 - +50°C				
Storage ambient temperature	-25 - +55 °C				
Operating/Storage ambient	0-90% No condensation				
External sizeW*D*Hmm ( )	423×260×453		513×310×493		
Package sizeW*D*Hmm ( )	520×370×520		610×420×550		